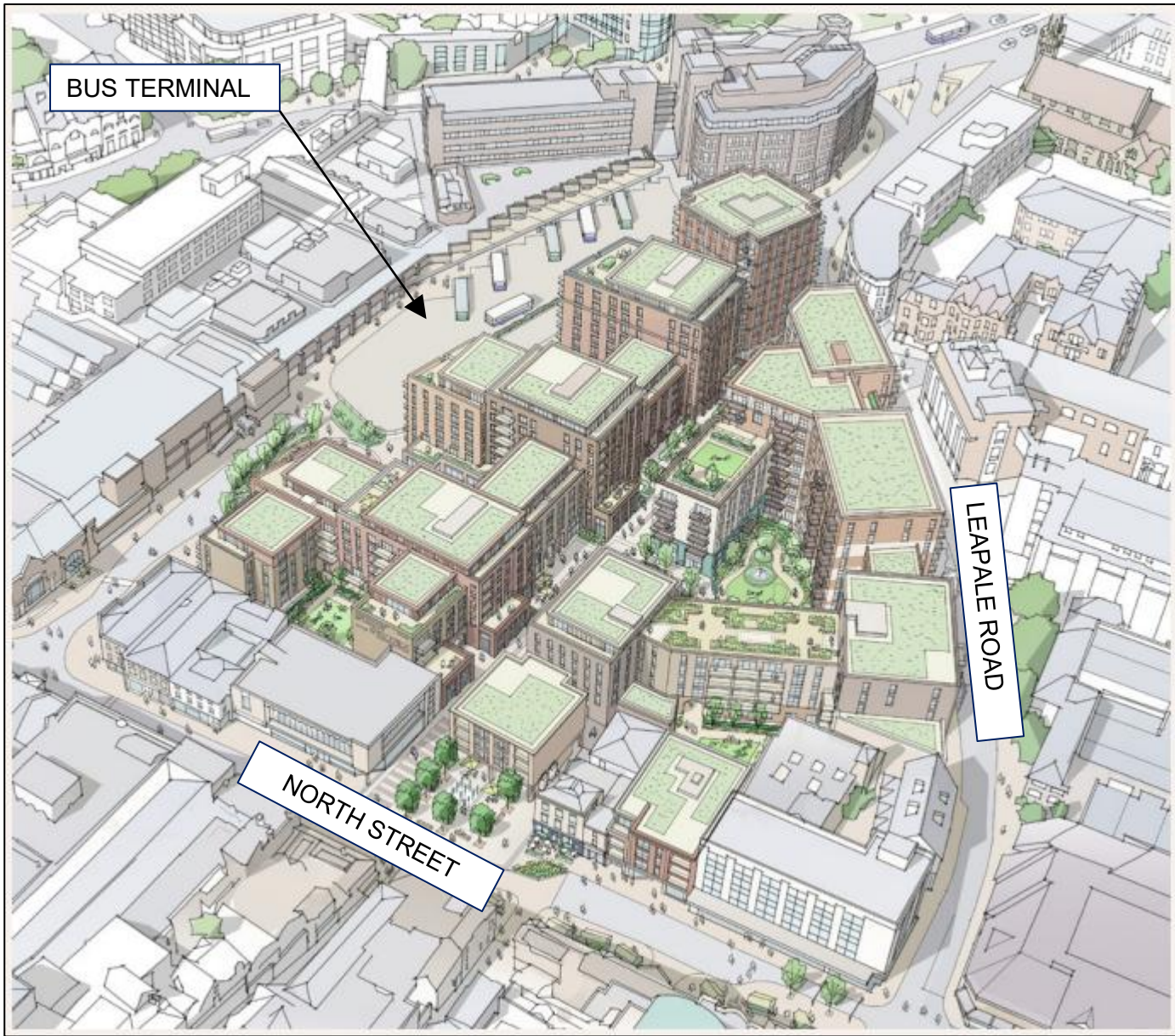


# GUILDFORD NORTH STREET MASTERPLAN

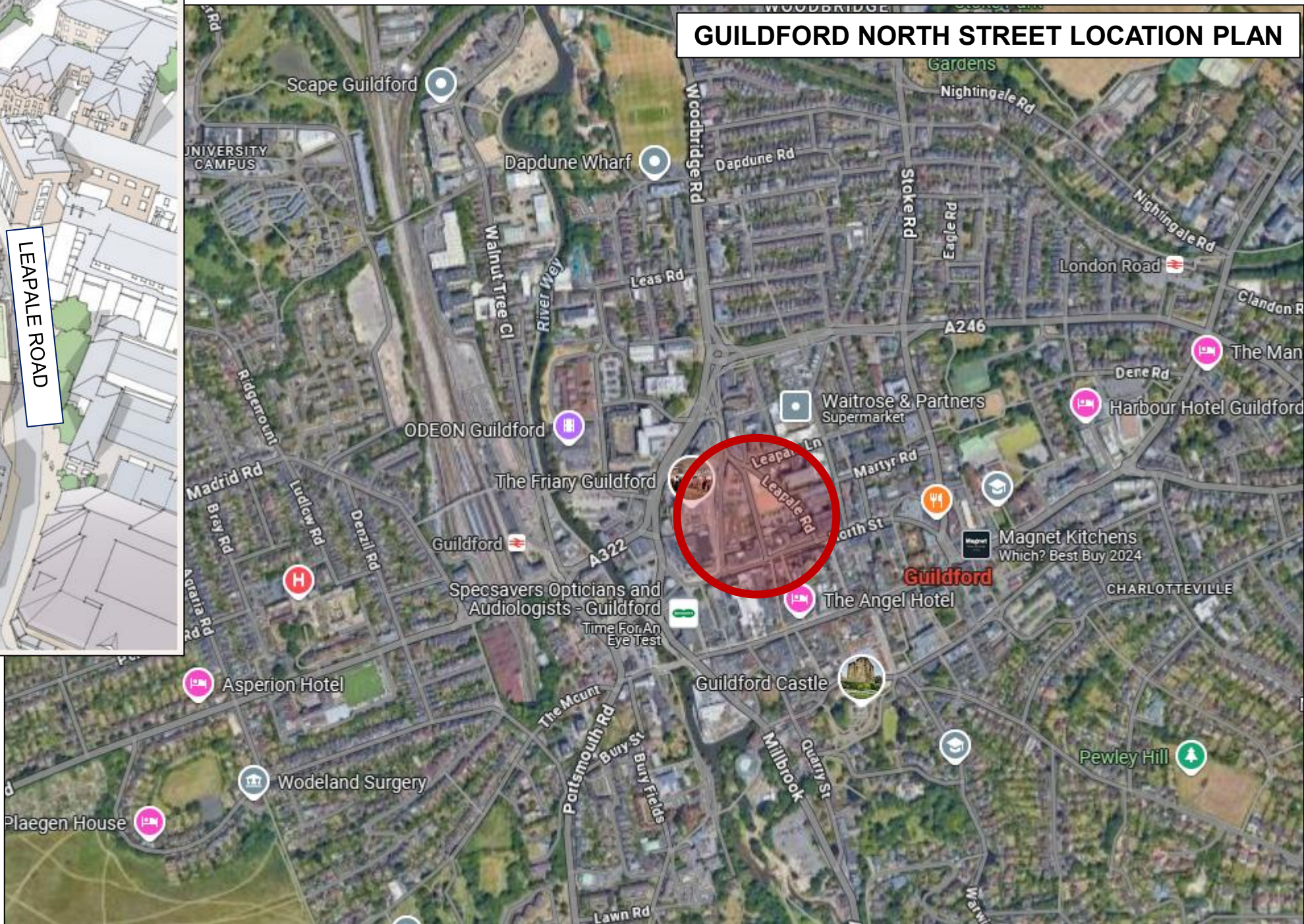


## LOCATION DETAILS

OS X (Eastings)	499585
OS Y (Northings)	149631
Nat Grid	SU995496 / SU9958549631
Nearest Post Code	GU1 4PU
Lat (WGS84)	N51:14:14 (51.23718018197939)
Long (WGS84)	W0:34:30 (-0.5749035782781772)
Lat,Long (WGS84)	51.23718018197939,-0.57490357827817
Lat (OSGB36)	N51:14:12 (51.236645529356714)
Long (OSGB36)	W0:34:24 (-0.5733587132476983)
Lat,Long (OSGB36)	51.236645529356714,-0.5733587132476
what3words	novel.amount.bother
Open Loc/Plus code	9C3X6CPG+V2H

# GUILDFORD NORTH STREET REGENERATION (HIGHWAY IMPROVEMENT WORKS, AND PEDESTRIANISATION) SUPPLEMENTARY INFORMATION BULLETIN

22nd JANUARY 2026  
(BULLETIN No.5)







## JANUARY 2026 HIGHWAY WORKS AREAS

JUNCTION OF WOODBRIDGE ROAD AND ONSLOW STREET

JUNCTION OF BUS TERMINAL EXIT, COMMERCIAL ROAD AND WOODBRIDGE ROAD

### LEAPALE ROAD HOARDING (SITE FENCING)

EXISTING SITE FENCING TO BE REMOVED AND RELOCATED IN ANTICIPATION OF LEAPALE ROAD WORKS. FOOTWAY WILL BE CLOSED UNTIL FURTHER NOTICE, PEDESTRIANS TO USE FOOTWAY ON NORTHERN SIDE OF LEAPALE ROAD (NEXT TO THE LEAPALE RD MULTISTOREY CAR PARK)

EXISTING DISABLED BAYS WILL ALSO BE REMOVED DURING THIS WORKS PERIOD

**INVESTIGATION WORKS CONCLUDING 30<sup>TH</sup> JANUARY**  
TRIAL HOLES IN FOOTPATH AT THE JUNCTION OF WOODBRIDGE ROAD AND ONSLOW STREET TO LOCATE SERVICES

TRAFFIC AND PEDESTRIAN ROUTES UNAFFECTED BY THESE WORKS

START DATE OF WIDENING WORKS (IN THIS AREA) TBC

### INVESTIGATION WORKS

TRIAL HOLES IN TRAFFIC ISLAND ADJACENT BUS TERMINAL EXIT TO LOCATE SERVICES, AND GENERAL CLEARANCE WORKS

PEDESTRIANS DIVERSIONS IN PLACE, PLEASE FOLLOW SIGNS. VEHICULAR TRAFFIC UNAFFECTED

START DATE OF CARRIAGEWAY WORKS ANTICIPATED TO COMMENCE WC 2<sup>ND</sup> FEBRUARY  
FURTHER UPDATE TO BE PROVIDED SOON

### PHASE 1 COMPLETION WORKS CONCLUDING 30<sup>TH</sup> JANUARY 2026

PAVING BY TAXI RANK. LOCAL PEDESTRIAN DIVERSIONS IN PLACE (TAXI RANK WILL OPEN SOON AFTER)

PAVING ADJACENT METRO BANK

ACCES TO ALL BUSINESSES ETC UNAFFECTED

### CONTACT TELEPHONE NUMBERS

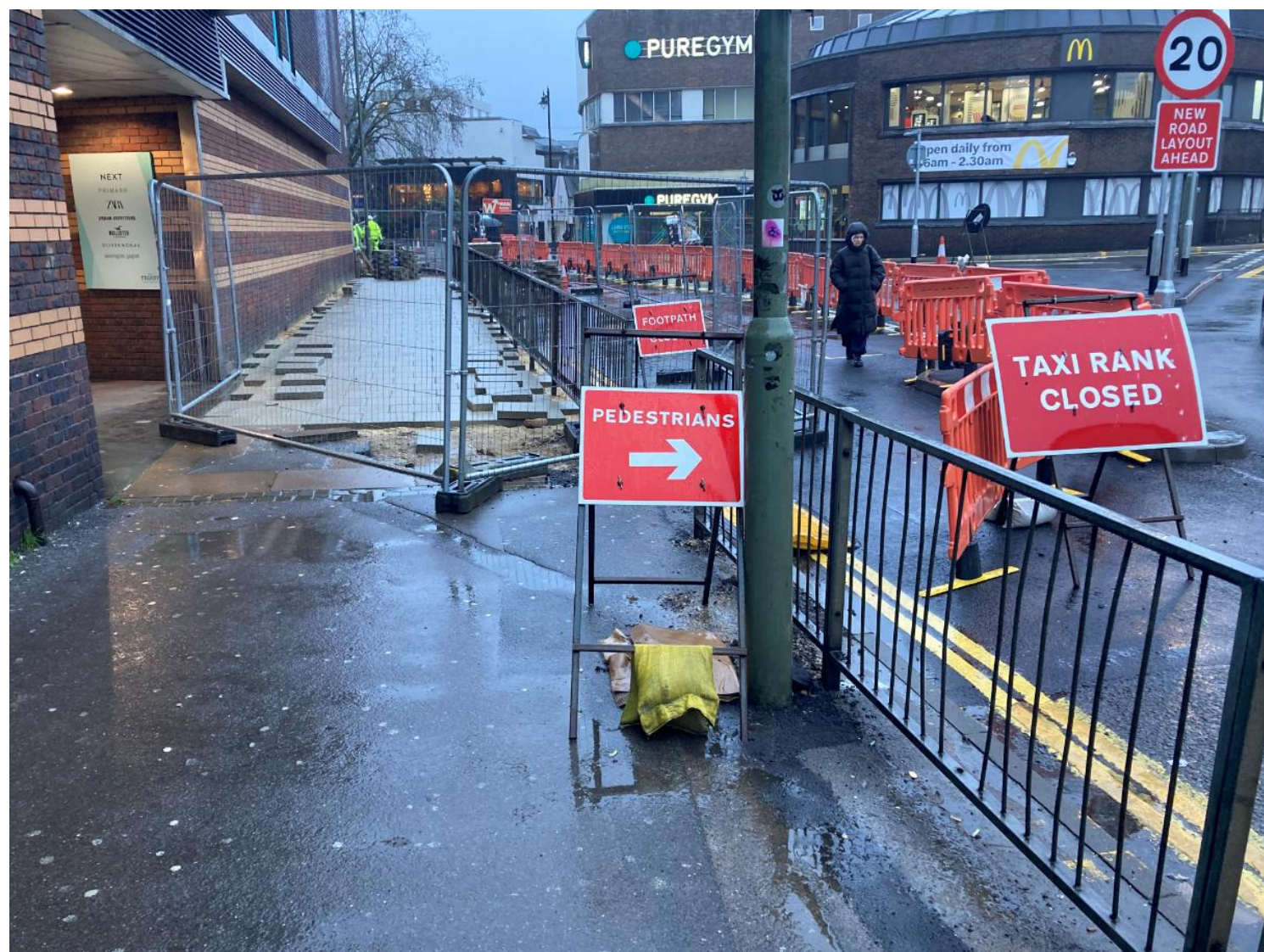
**Out Of Hours Emergency Contact Number**  
**07710 077737**

**Walker Construction**  
**01303 851111**





## PHASE 1-PROGRESS OF TAXI RANK FOOTWAY PAVING



## PHASE 1-PROGRESS OF METRO BANK FOOTWAY PAVING



### CONTACT TELEPHONE NUMBERS

**Out Of Hours Emergency Contact Number**  
**07710 077737**

**Walker Construction**  
**01303 851111**