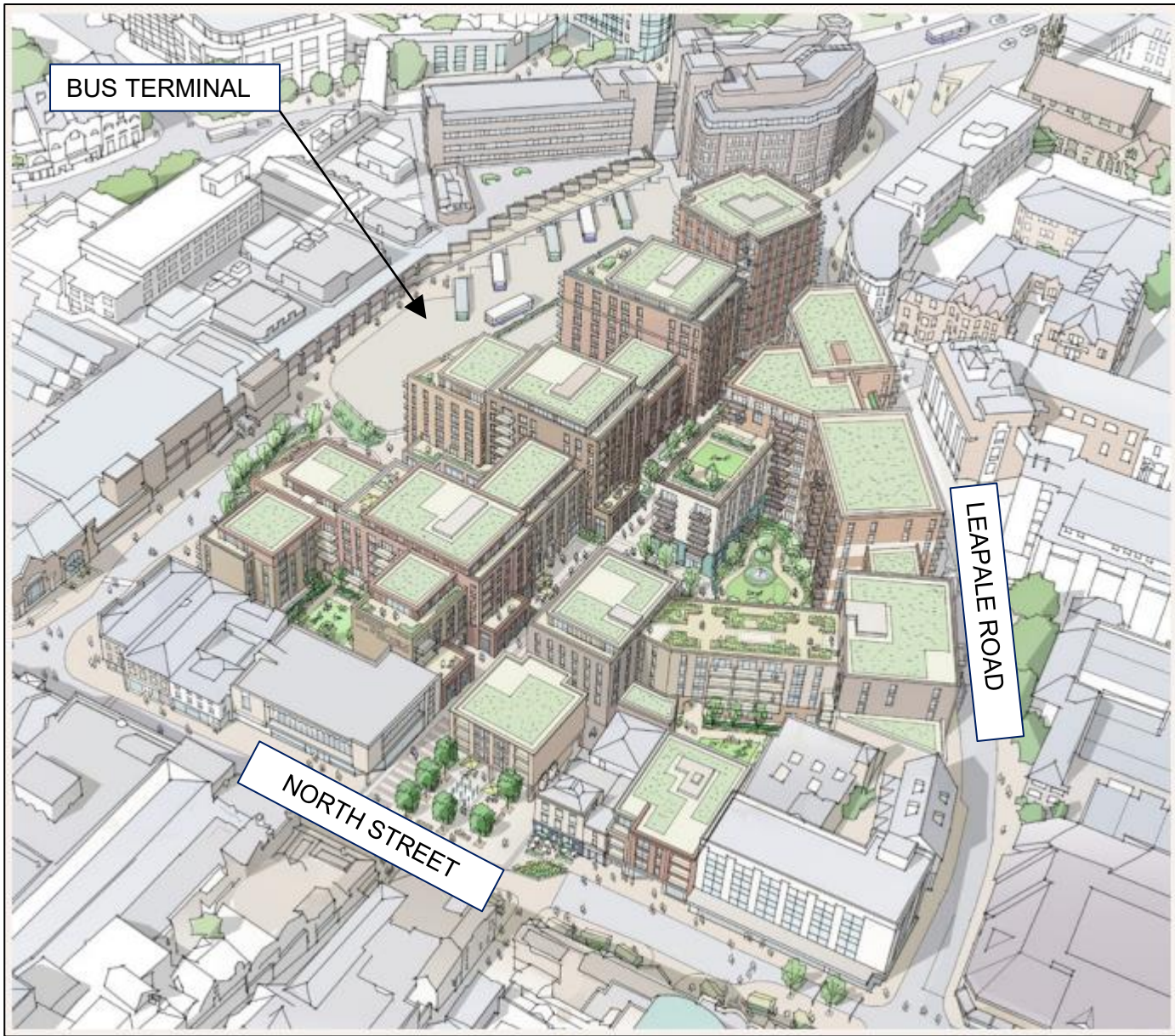


# GUILDFORD NORTH STREET MASTERPLAN



## LOCATION DETAILS

OS X (Eastings)	499585
OS Y (Northings)	149631
Nat Grid	SU995496 / SU9958549631
Nearest Post Code	GU1 4PU
Lat (WGS84)	N51:14:14 (51.23718018197939)
Long (WGS84)	W0:34:30 (-0.5749035782781772)
Lat,Long (WGS84)	51.23718018197939, -0.57490357827817
Lat (OSGB36)	N51:14:12 (51.236645529356714)
Long (OSGB36)	W0:34:24 (-0.5733587132476983)
Lat,Long (OSGB36)	51.236645529356714, -0.5733587132476
what3words	novel.amount.bother
Open Loc/Plus code	9C3X6CPG+V2H

## GUILDFORD NORTH STREET REGENERATION (HIGHWAY IMPROVEMENT WORKS, AND PEDESTRIANISATION) SUPPLEMENTARY INFORMATION BULLETIN

27<sup>TH</sup> AUGUST 2025  
(BULLETIN No.1)



**HIGHWAY WORKS WILL COMMENCE 1<sup>ST</sup> SEPTEMBER 2025**



Further to Walker Construction's communication of the upcoming highway works to Guildford North Street, we are pleased to provide you with some additional information.

From **Monday, 1<sup>st</sup> September 2025**, for an expected duration of **14 weeks**, Walker Construction shall commence the following Highway improvement works to North Street between the junctions of Onslow Street and Commercial Road. The works shall include the following:

- Surface water drainage works
- Replacement of existing road edge details with new kerbs and paving upon footways
- Improved non-controlled crossing locations
- New carriageway surfacing and road marking

To enable the highway works to take place, various Traffic Management systems shall be implemented to ensure access is maintained around the works areas.

Traffic, whilst slowed, will still have thoroughfare through the works.

Works will be undertaken to footways therefore during this time, pedestrian routes will be amended with alternative pedestrian routes clearly signposted. We apologise for any inconvenience and appreciate your collaboration in temporarily following the alternative routes.

As part of the highway works, there is requirement to implement full road closures to undertake in carriageway activities. Further notice will be provided for these works via separate communication.

#### Contact Telephone Numbers

**Out Of Hours Emergency Contact Number:**  
**Walker Construction:**

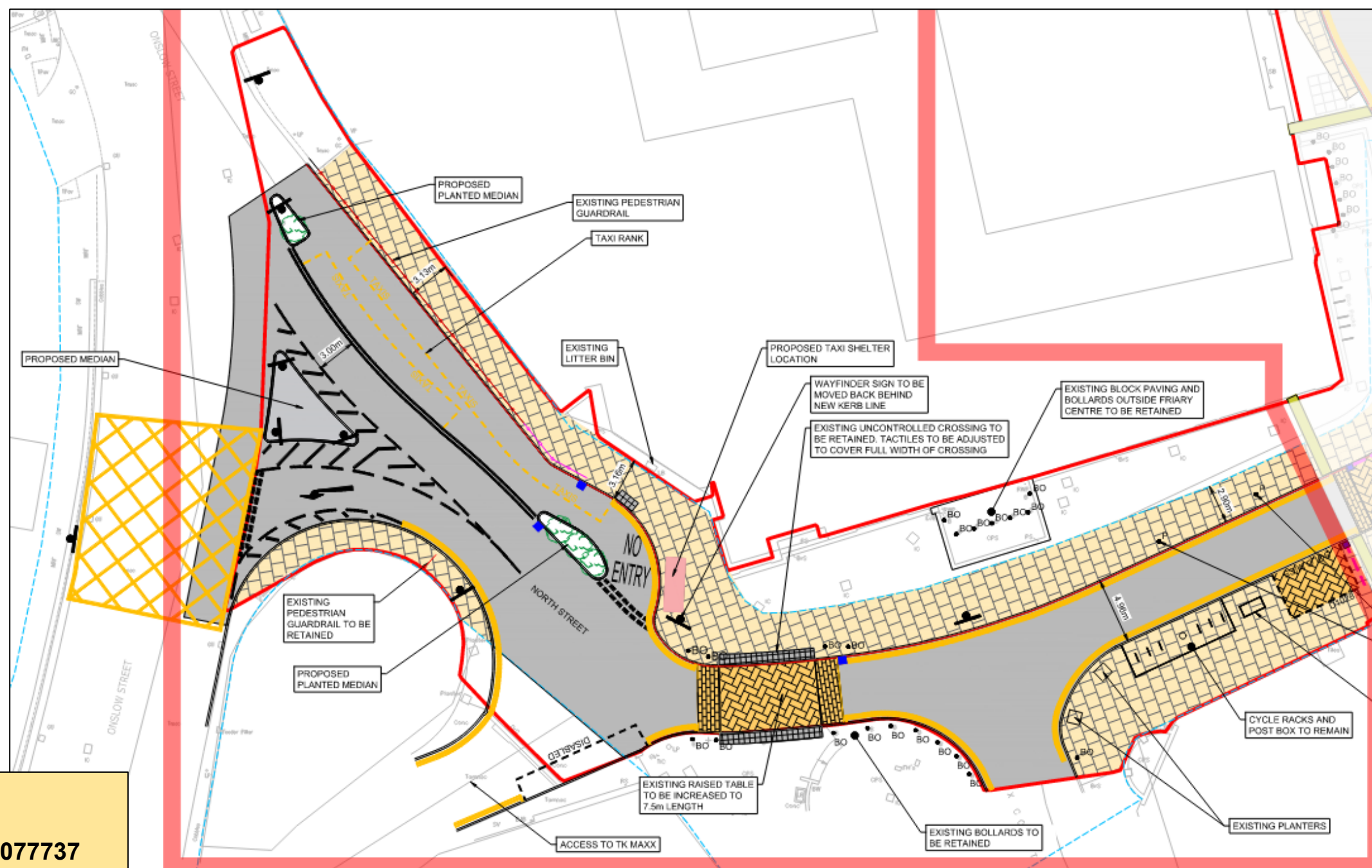
**07710 077737**  
**01303 851111**

## NOTIFICATION OF UPCOMING HIGHWAY WORKS 27<sup>TH</sup> AUGUST 2025 (BULLETIN No.1)

### NORTH STREET, GUILDFORD

### BETWEEN THE JUNCTIONS OF ONSLOW STREET AND COMMERCIAL ROAD

### WORKS COMMENCE MONDAY 1<sup>ST</sup> SEPTEMBER 2025

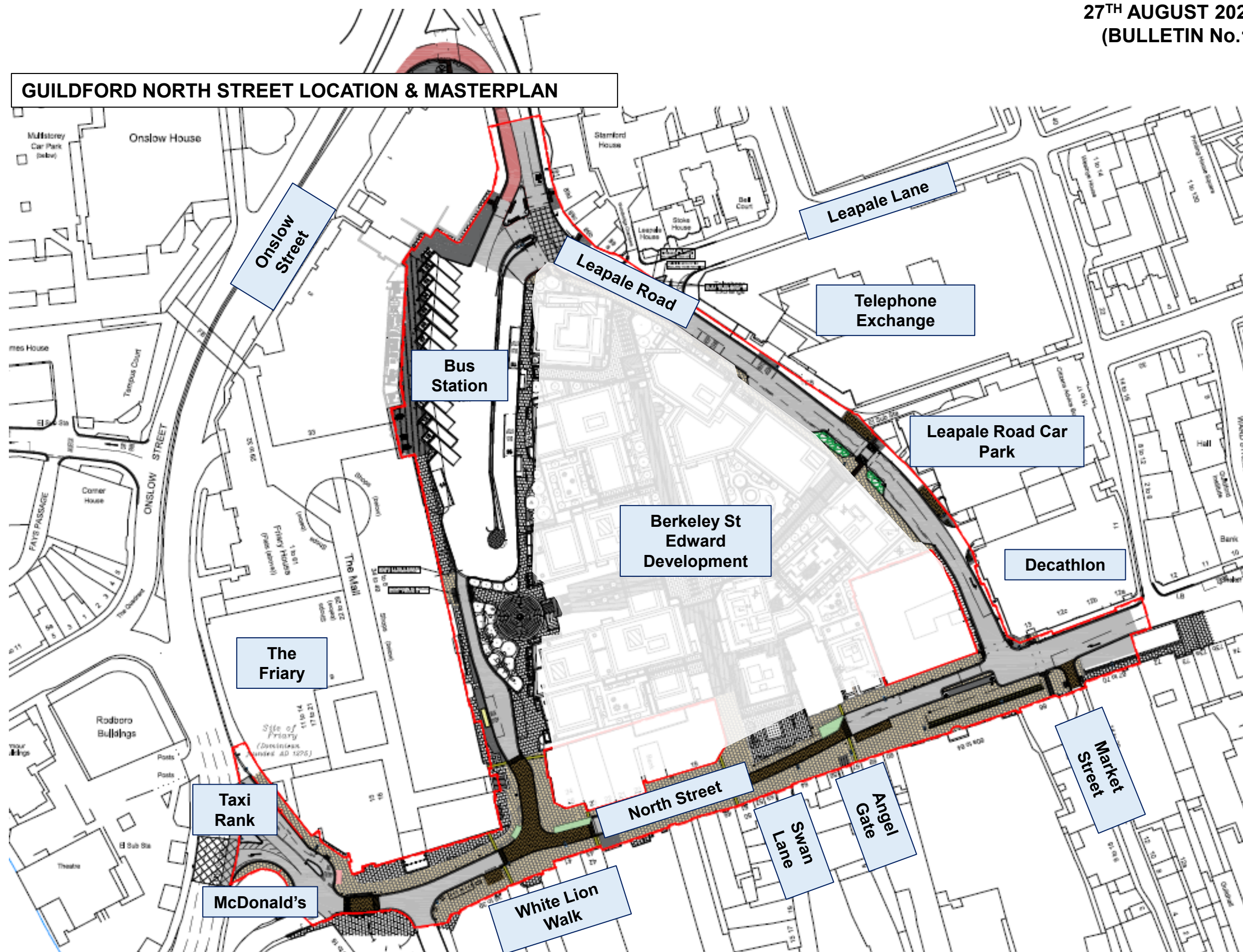




27<sup>TH</sup> AUGUST 2025  
(BULLETIN No.1)

Please refer to the adjacent plan highlighting the proposed area of Guildford North Street Development.

Key buildings, road names and wayfinding points have been included aid familiarisation with the scheme





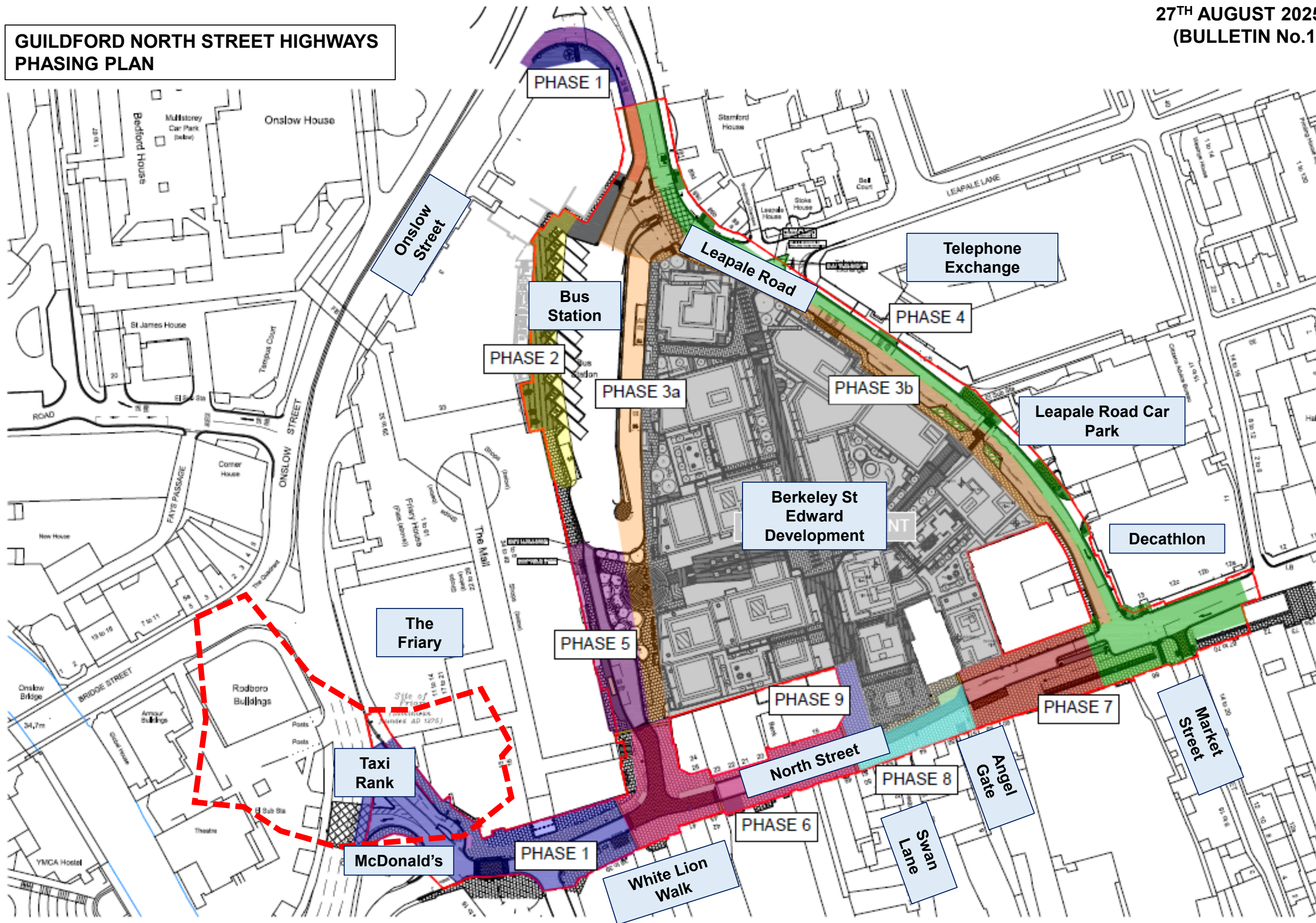
The highway works will be delivered in 9 key phases.

Please refer to the adjacent plan that sets out the highway works phasing

Please be advised that due to the complexities of coordinating the works with other stakeholders, the phasing may be subject to change. Updates will be provided as works progress

Phase	Key
Phase 1	
Phase 2	
Phase 3a	
Phase 3b	
Phase 4	
Phase 5	
Phase 6	
Phase 7	
Phase 8	
Phase 9	

# GUILDFORD NORTH STREET HIGHWAYS PHASING PLAN

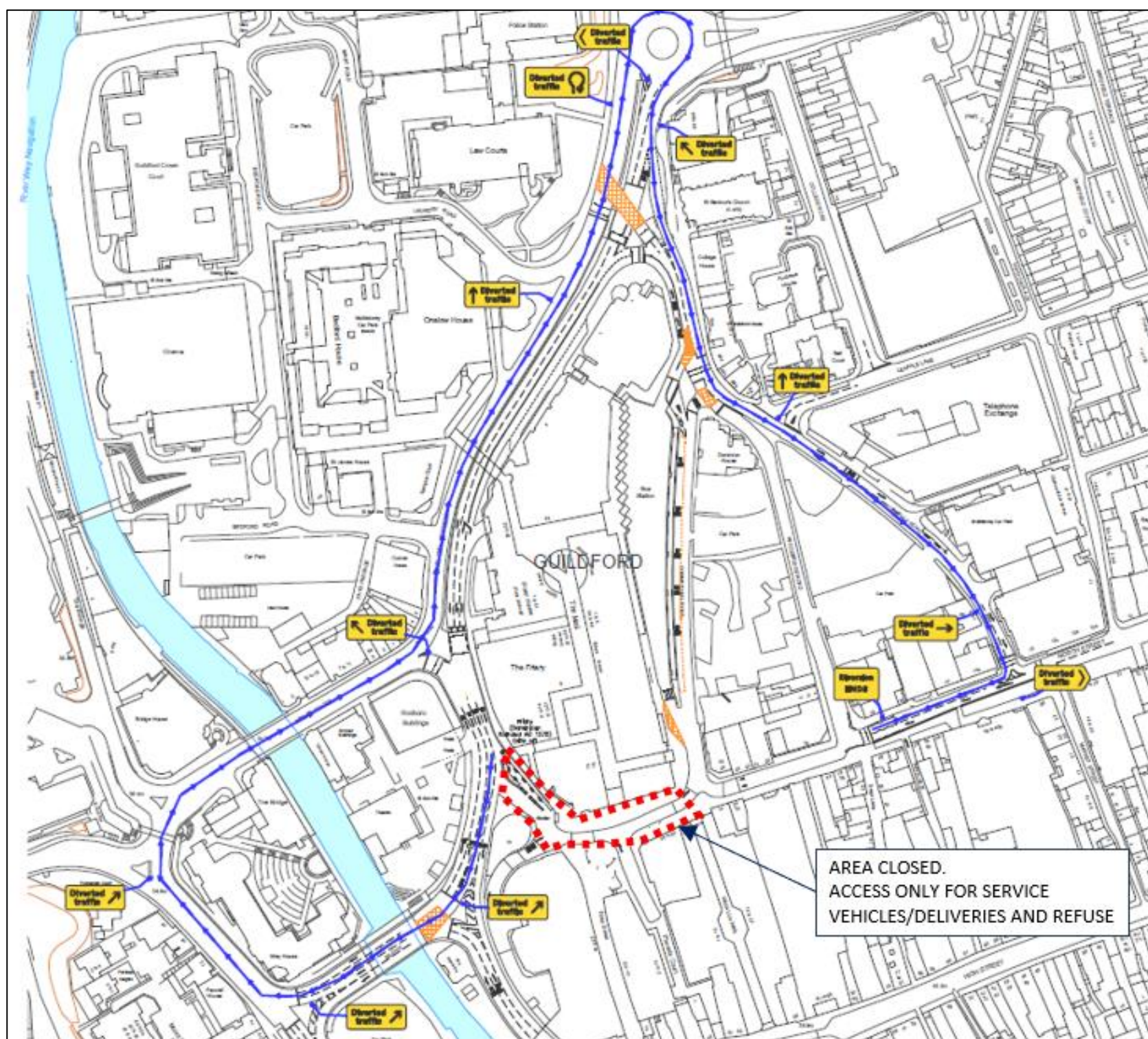


27<sup>TH</sup> AUGUST 2025  
(BULLETIN No.1)



27<sup>TH</sup> AUGUST 2025  
(BULLETIN No.1)

## INDICATIVE VEHICLE DIVERSION ROUTE DURING PHASE 1 NIGHT HIGHWAY WORKS (SUBJECT TO APPROVAL)



## PHASE 1 HIGHWAY WORKS

**Start date – 1<sup>st</sup> September 2025**

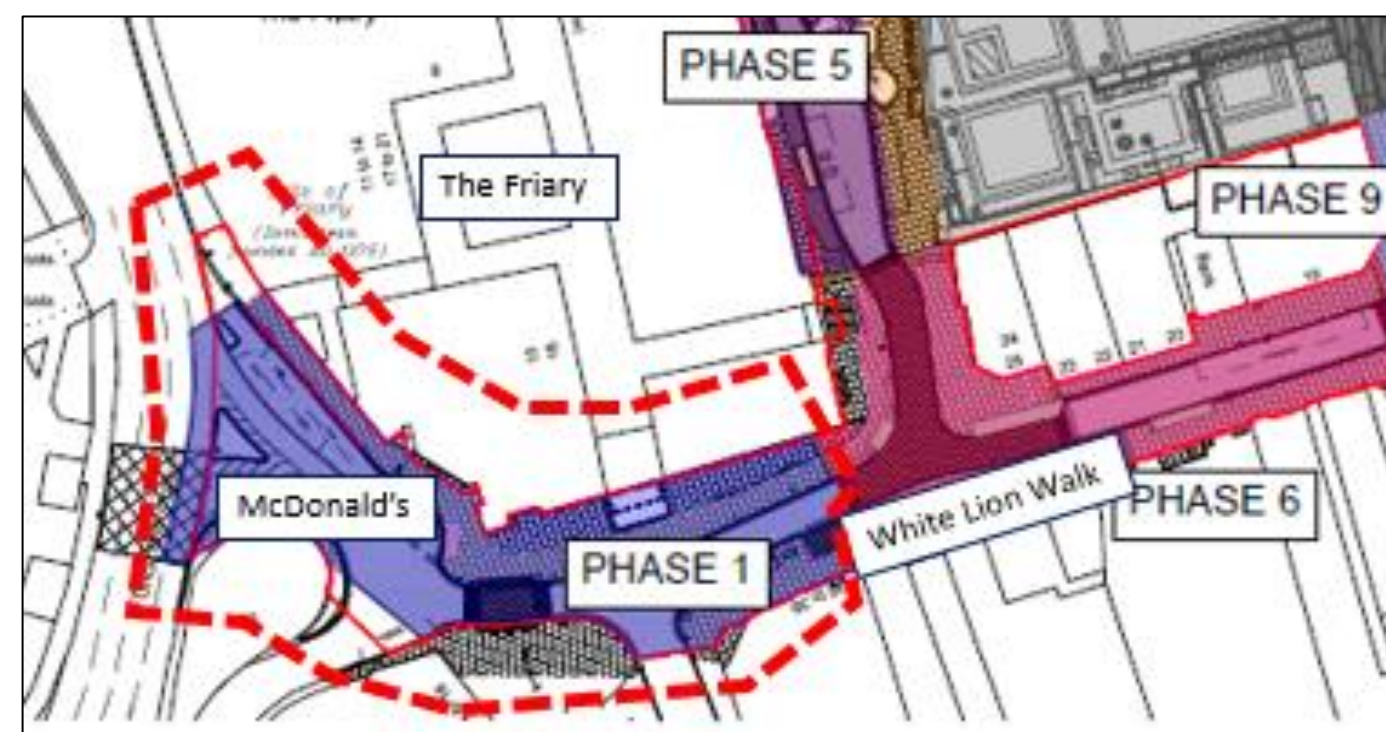
**End date – 26<sup>th</sup> November 2025**

Some of the Phase 1 highway works will need to be undertaken at night to reduce the impact on traffic (most notably resurfacing works to the new Taxi Rank and some surfacing to Onslow Street).

These works will be undertaken late in the phase and additional communications will be issued with further details closer to the time.

Deliveries to businesses within the area will be maintained through temporary traffic diversions as demonstrated in the adjacent plan (Indicative diversion plan to be agreed with stakeholders).

Please be aware that during the night works, access to the area will be restricted. Again, additional communications will be issued with further details closer to the time to enable deliveries to be suitably planned to accommodate the project.





27<sup>TH</sup> AUGUST 2025  
(BULLETIN No.1)

### **Who Is Carry Out The Works?**

Walker Construction (UK) Ltd will be carrying out the highways works on behalf of St Edward as part of the Guildford Town Centre section 278 highways agreement under the guidance of Surrey County Council.

Walker Construction is managing the works and will make every effort to minimise the impact of the works on the local community and businesses.

If you wish to report any significant concerns, please talk to the Site Management team on site or use the contact details provided within this bulletin.

We will aim to carry out the highway works as effectively, efficiently and collaboratively as possible.

**Working hours are 0800 – 1700 Monday to Friday**

***\* There may be isolated occasions whereby working is required outside of these hours \****

Works from **Monday 1<sup>st</sup> September 2025** for an expected duration of **14 weeks**

Sometimes the works may be delayed by poor weather and unforeseen circumstances. We will endeavour to provide updates on any changes via the information boards around the works areas

Alternatively, please visit <https://uk.one.network/> where you can find information on any changes to the works.

**PEDESTRIAN DIVERSIONS WILL BE IN PLACE – PLEASE FOLLOW DIRECTIONAL SIGNAGE  
DISPLAYED ON SITE**

**PLEASE DO NOT WALK INTO THE ROAD TO AVOID PEDESTRAIN MANAGEMENT SYSTEMS**



<https://www.walker-construction.co.uk/>

We apologise in advance for any delays the works may cause and thank you for your cooperation and patience

Please keep this information leaflet in a safe place for future reference



## PHASE 1 HIGHWAY WORKS TEMPORARY TAXI RANK LOCATIONS

During the course of the Phase 1 highway works, the Taxi Rank adjacent to Onslow Street will be relocated as follows (Bedford Road and High Street):

### Taxi Rank Locations During Works

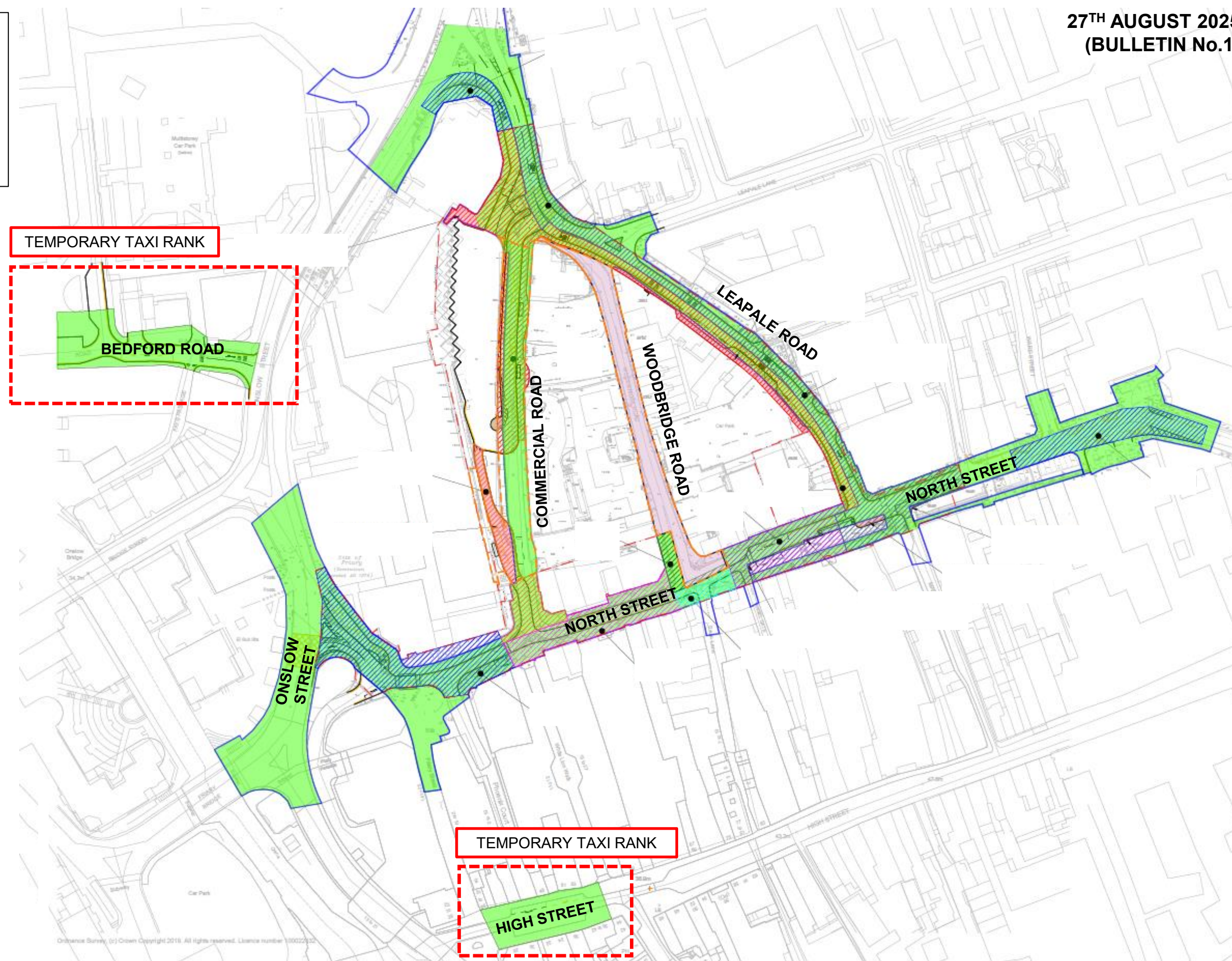
To enable the works to be undertaken safely, the existing Taxi Rank on North Street close to the junction of Onslow Street, shall be relocated from the Monday 8<sup>th</sup> of September for 13 weeks.

Street alterations to facilitate alternative locations for the temporary Taxi Rank are displayed below:

#### High Street, Guildford



#### Bedford Road, Guildford



27<sup>TH</sup> AUGUST 2025  
(BULLETIN No.1)